



Introduction to the Globus Platform

Vas Vasiliadis
vas@uchicago.edu

NYSERNet — May 2, 2018





Useful developer links

> github.com/globus

> docs.globus.org

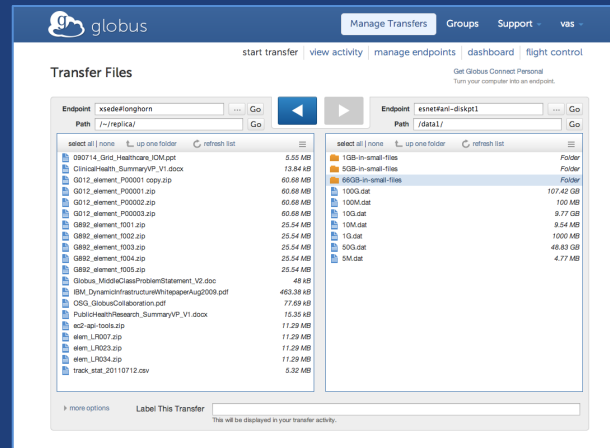


Globus serves as...

A platform for building science gateways, portals and other web applications in support of research and education



Use(r)-appropriate interfaces



Web App



```
(globus-cli) jupiter:~ vas$ globus
Usage: globus [OPTIONS] COMMAND [ARGS]...

Options:
  -v, --verbose          Control level of output
  -h, --help            Show this message and exit.
  -F, --format [json|text] Output format for stdout. Defaults to text
  --map-http-status TEXT Map HTTP statuses to any of these exit codes:
                        0,1,50-99. e.g. "404=50,403=51"

Commands:
  bookmark      Manage Endpoint Bookmarks
  config        Modify, view, and manage your Globus CLI config.
```

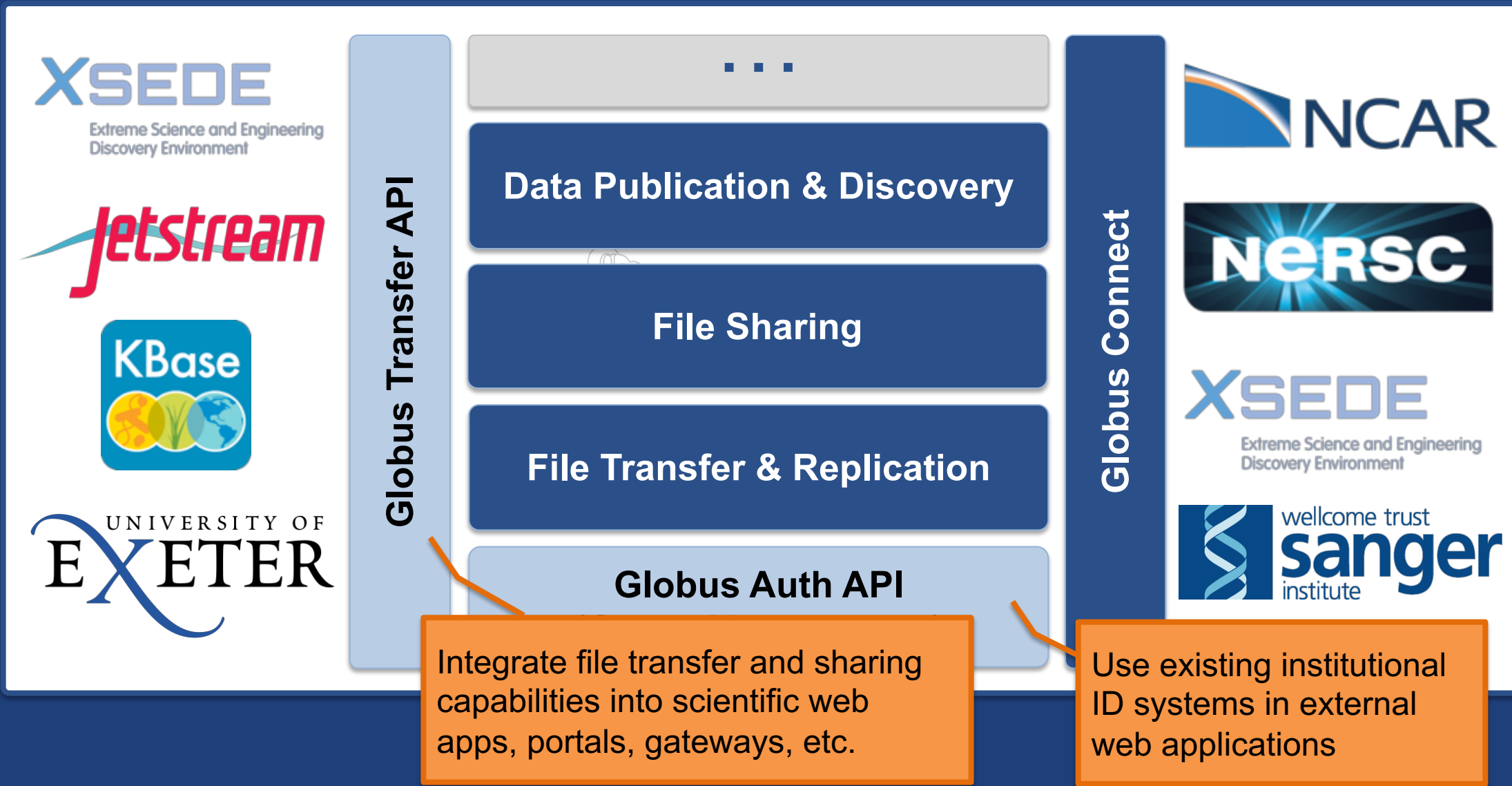
CLI

```
GET /endpoint/7026c6d4-0c84-11e8-a763-0a448319c2f8
PUT /endpoint/48640ab2-0c84-22b9-b571-bb4589ac34d4
200 OK
X-Transfer-API-Version: 0.10
Content-Type: application/json
...
```

Rest API



Globus Platform-as-a-Service



Globus Transfer API

...

Data Publication & Discovery

File Sharing

File Transfer & Replication

Globus Auth API

Globus Connect



Integrate file transfer and sharing capabilities into scientific web apps, portals, gateways, etc.

Use existing institutional ID systems in external web applications



Globus Platform Transfer API



Globus Transfer API

- **Globus Web App consumes public Transfer API**
- **Resource named by URL (standard REST approach)**
 - Query parameters allow refinement (e.g., subset of fields)
- **Globus APIs use JSON for documents and resource representations**
- **Requests authorized via OAuth2 access token**
 - Authorization: Bearer asdfkqhafsdafeawk

docs.globus.org/api/transfer

Globus Python SDK

- **Python client library for the Globus Auth and Transfer REST APIs**
- **`globus_sdk.TransferClient` class handles connection management, security, framing, marshaling**

```
from globus_sdk import TransferClient  
tc = TransferClient()
```

globus.github.io/globus-sdk-python



TransferClient low-level calls

Thin wrapper around REST API

– `post()`, `get()`, `update()`, `delete()`

`get(path, params=None, headers=None, auth=None, response_class=None)`

- `path` – path for the request, with or without leading slash
- `params` – dict to be encoded as a query string
- `headers` – dict of HTTP headers to add to the request
- `response_class` – class response object, overrides the client's `default_response_class`
- Returns: `GlobusHTTPResponse` object



TransferClient higher-level calls

- One method for each API resource and HTTP verb
- Largely direct mapping to REST API

```
endpoint_search(filter_fulltext=None,  
                filter_scope=None,  
                num_results=25,  
                **params)
```



Walkthrough Jupyter Notebook jupyter.demo.globus.org

github.com/globus/globus-jupyter-notebooks



Endpoint Search

- **Plain text search for endpoint**
 - Searches owner, display name, keywords, description, organization, department
 - Full word and prefix match
- **Limit search to pre-defined scopes**
 - all, my-endpoints, recently-used, in-use, shared-by-me, shared-with-me
- **Returns: List of endpoint documents**



Endpoint Management

- **Get endpoint (by id)**
- **Update endpoint**
- **Create & delete (shared) endpoints**
- **Manage endpoint servers**



Endpoint Activation

- **Activation: Binding a credential to an endpoint for login**
- **Globus Connect Server endpoints that use MyProxy or MyProxy OAuth require login via web**
- **Auto-activate**
 - Globus Connect Personal and shared endpoints use Globus-provided credential
 - An endpoint that shares an identity provider with another activated endpoint will use credential
- **Must auto-activate before any API calls to endpoints**
- **If credentials exist, OK; otherwise response tells you how to activate**



File operations

- **List directory contents (ls)**
- **Make directory (mkdir)**
- **Rename**
- **Note:**
 - Path encoding & UTF gotchas
 - Don't forget to auto-activate first



Task submission

- **Asynchronous operations**
 - Transfer (with optional sync level option)
 - Delete
- **Get `submission_id`, followed by `submit`**
 - Ensures once and only once submission

Task management

- **Get task by id**
- **Get task list**
- **Update task by id (label, deadline)**
- **Cancel task by id**
- **Get event list for task**
- **Get task pause info**



Bookmarks

- **Get list of bookmarks**
- **Create bookmark**
- **Get bookmark by id**
- **Update bookmark**
- **Delete bookmark by id**

- **Cannot perform other operations directly on bookmarks**
 - Requires client-side resolution

Shared endpoint access rules (ACLs)

- **Access manager role required to manage permission/ACLs**
- **Operations:**
 - Get list of access rules
 - Get access rule by id
 - Create access rule
 - Update access rule
 - Delete access rule



Management API

- **Allow endpoint administrators to monitor and manage all tasks with endpoint**
 - Task API is essentially the same as for users
 - Information limited to what they could see locally
- **Cancel tasks**
- **Pause rules**

Exercise: Transfer API - Data distribution

Modify Jupyter notebook to...

1. Find the endpoint ID for the “NYSERNet Share” endpoint
2. Bonus points: how many endpoints are currently associated with “NYSERNet”?
3. Make a directory for your files: /<your_name>
4. Get endpoint ID: “ESnet Read-Only Test DTN at Sunnyvale”
5. Transfer “/data1/50GB-in-medium-files” to your directory
6. Optional: Check if successfully transferred and delete files



Solution: Transfer API

- **Find ID for “NYSERNet Share” endpoint**

```
r = tc.get("/endpoint_search",  
          params=dict(filter_fulltext="NYSERNet Share", limit=1))
```

- **Make a directory for your files: /<your_name>**

```
endpoint_id = nysernet_ep_id  
endpoint_path = "/vas"
```

- **Transfer ESnet files to your directory**

```
source_endpoint_id = "db57ddde-6d04-11e5-ba46-22000b92c6ec"  
source_path = "/data1/50GB-in-small-files/"  
dest_endpoint_id = nysernet_ep_id  
dest_path = "/vas/50GB-in-small-files/"
```



Solution: Transfer API

- **Check if successfully transferred and delete files**

```
If status == "SUCCEEDED":
```

```
    source_endpoint_id = "db57ddde-6d04-11e5-ba46-22000b92c6ec"
```

```
    endpoint_id = nysernet_ep_id
```

```
    path = "/vas/50GB-in-small-files/"
```

```
    r = globus_sdk.DeleteData(tc, endpoint_id, recursive=True)
```

```
    ddata.add_item(path)
```

```
    tc.endpoint_autoactivate(endpoint_id)
```

```
    submit_result = tc.submit_delete(ddata)
```

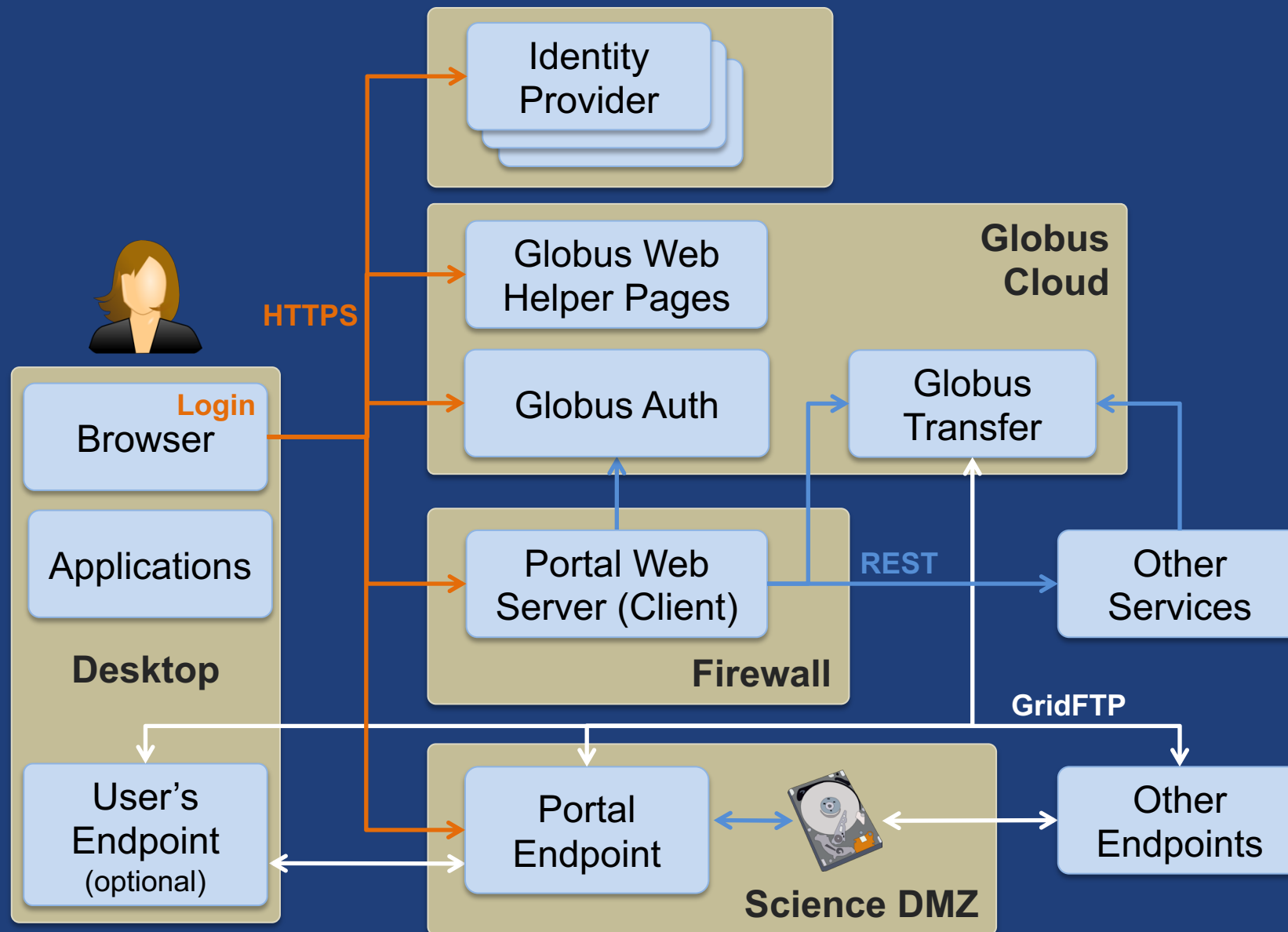
```
    print("Task ID:", submit_result["task_id"])
```



How can I do this in my
[science gateway, data
portal, web app, ...]?



Prototypical research data portal





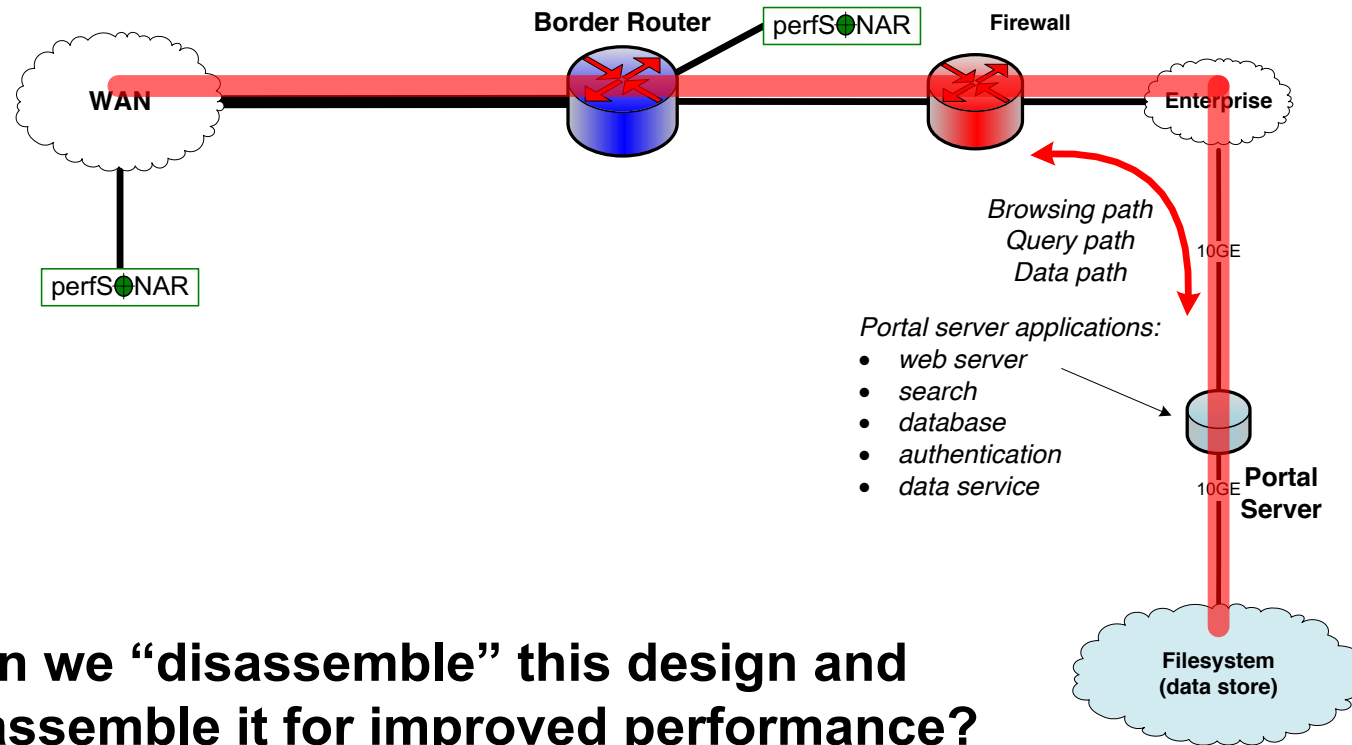
Demonstration Modern Research Data Portal



Maximizing the value of the Science DMZ



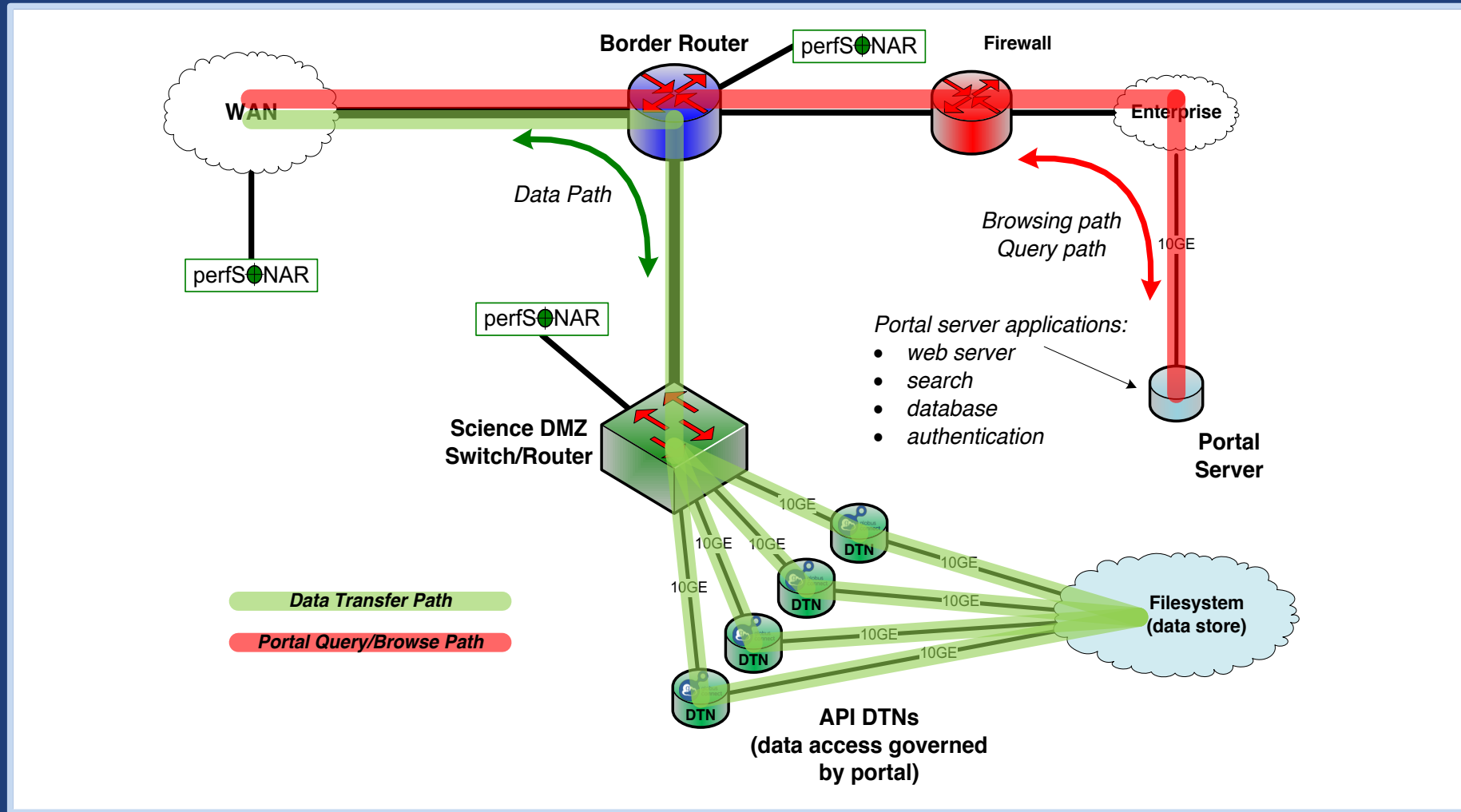
Legacy data portal/science gateway design



Can we “disassemble” this design and reassemble it for improved performance?



Modern data apps leverage the Science DMZ



fasterdata.es.net/



Data Distribution: ARM Climate Research Facility

Data Selection Summary

Signed in as ANANTHAKRISHNANR1.

mergesonde1mace c1 @ fkb M1 [Generate Citation](#) 274 file(s) // 6014 MB

Order Complete Datastream Extract Specific Measurements

Note: All variables will be delivered for this datastream.

Measurement : Atmospheric temperature
Variable : Temperature // temp

2007-04-01

2007-12-31

Combine files by datastream

File format

Remove data flagged by Data Quality Reports (DQR) of type Incorrect Suspect

Data Delivery Options

- FTP
- Globus
- THREDDS
- Dropbox

Extraction options only apply when "Extract Specific Measurements" is selected.

Original files will be delivered as part of all orders.



Analysis Workflow Integration: Wellcome Sanger

Sanger Imputation Service **Beta**

Home About Instructions ▾ Resources Status

Sanger Imputation Service

This is a free genotype **imputation** and **phasing** service provided by the [Wellcome Trust Sanger Institute](#). You can upload GWAS data in VCF or 23andMe format and receive imputed and phased genomes back. Click [here](#) to learn more and [follow us on Twitter](#).

Before you start

Be sure to [read through the instructions](#).

You will need to set up a free account with [Globus](#) and have [Globus Connect](#) running at your institute or on your computer to transfer files to and from the service.

Ready to start?

If you are ready to upload your data, please fill in the details below to **register an imputation and/or phasing job**. If you need more information, see the [about](#) page.

Full name

Organisation

Email address

What is this [?](#)

Globus user identity

[➔ Next](#)

News [@sangerimpute](#)

11/05/2016
Thanks to [EAGLE](#), we can now return **phased data**. The HRC panel has been updated to r1.1 to fix a [known issue](#). See [ChangeLog](#) for more details.

15/02/2016
Globus API changed, please see [updated instructions](#).

17/12/2015
New status page and reworked internals. See [ChangeLog](#).

09/11/2015
Pipeline updated to add some features requested by users. See [ChangeLog](#).

[🔍 See older news...](#)



Globus Platform

Auth API

Globus Auth: Foundational IAM service

- **Enables login for diverse app ecosystem**
- **Simplifies creation/integration of apps, services**
- **Outsources mundane feature development**
- **Brokers authentication and authorization interactions**
- **Protects REST API communications**
- **No new identity required**
- **Employs least privileges security model**
- **Programming language and framework agnostic**



Based on widely used web standards

- **OAuth 2.0 Authorization Framework (a.k.a. OAuth2)**
- **OpenID Connect Core 1.0 (a.k.a. OIDC)**
- **Access via OAuth2 and OIDC libraries of your choice**
 - Google OAuth Client Libraries (Java, Python, etc.), Apache mod_auth_openidc, etc.
 - Globus Python SDK

docs.globus.org/api/auth



Fundamental Concepts

- **Scopes: APIs that client is requesting access to**
 - Scope syntax: OpenID Connect: openid, email, profile
 - urn:globus:auth:scope:<service-name>:<scope-name>
- **Consents: authorization client to access a service, within limited scope, on the resource owner's behalf**



Globus account

- **Globus Account = Primary identity + Linked Identities**
 - An identity can be primary on only one account
 - Identities can be linked to only one account
- **Account does not have own identifier**
 - An account is uniquely identified using its primary identity



Identity *id* vs. *username*

- **Identity *id***
 - Unique among all Globus Auth identities; will never be reused
 - UUID
 - Always use this to refer to an identity
- **Identity *username***
 - Unique at any point in time; may change, may be re-used
 - Case-insensitive user@domain
 - Can map to/from id, for user experience
- **Auth API allows mapping back and forth**

App registration

- **Client_id and client_secret for service**
- **App display name**
- **Declare required scopes**
 - Need long-term, offline refresh tokens?
 - May require authorization from scope admin
- **OAuth2 redirect URIs**
- **Links for terms of service & privacy policy**
- **Effective identity policy (optional)**

developers.globus.org

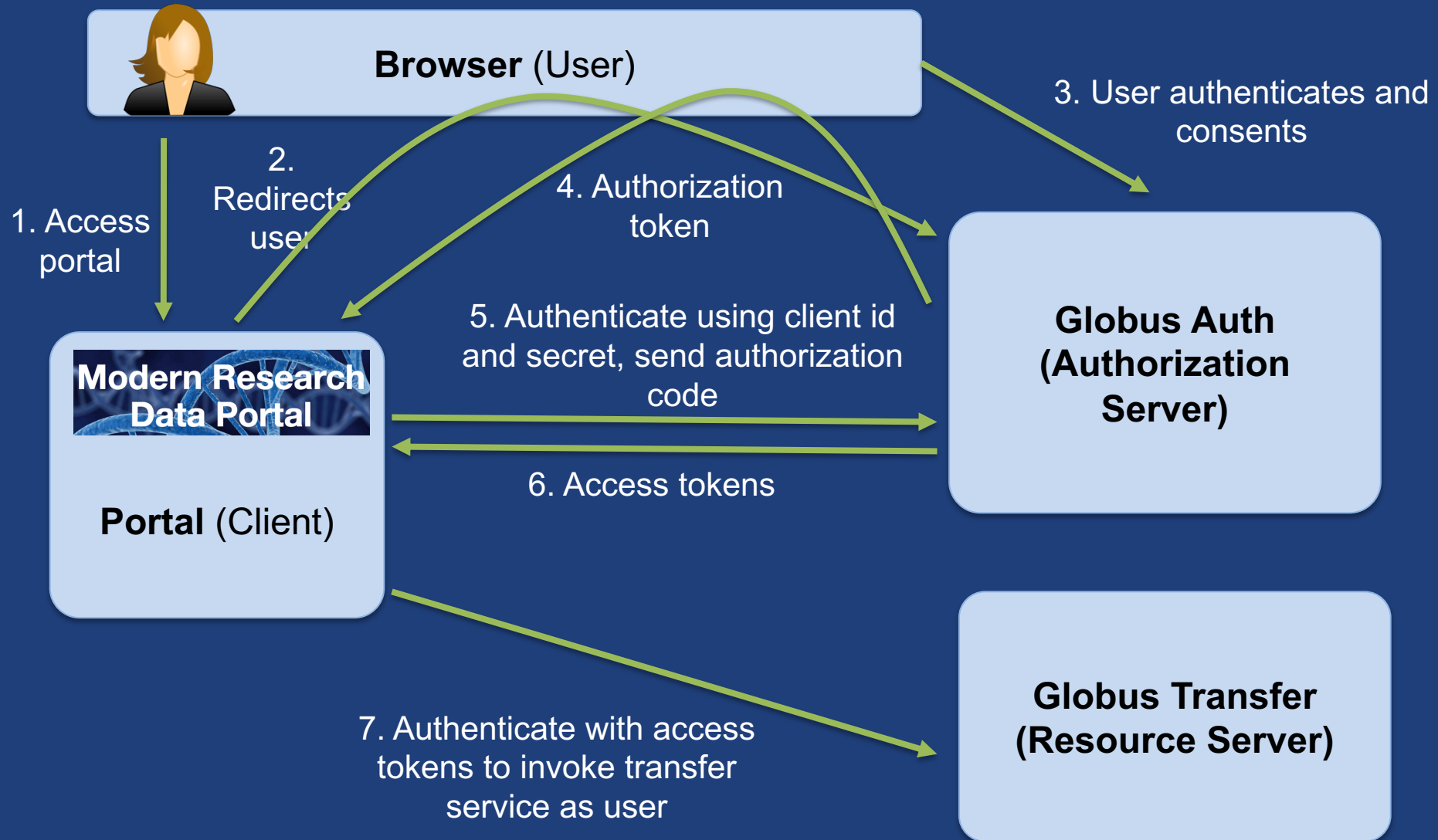


Use case: Portal calling services on user's behalf

- **Examples**
 - Portal starting transfer for user
- **Authorization Code Grant**
 - With service scopes
 - Can also request OIDC scopes
- **Confidential client**
- **Globus SDK:**
 - To get tokens: ConfidentialAppAuthClient
 - To use tokens: AccessTokenAuthorizer



Authorization Code Grant



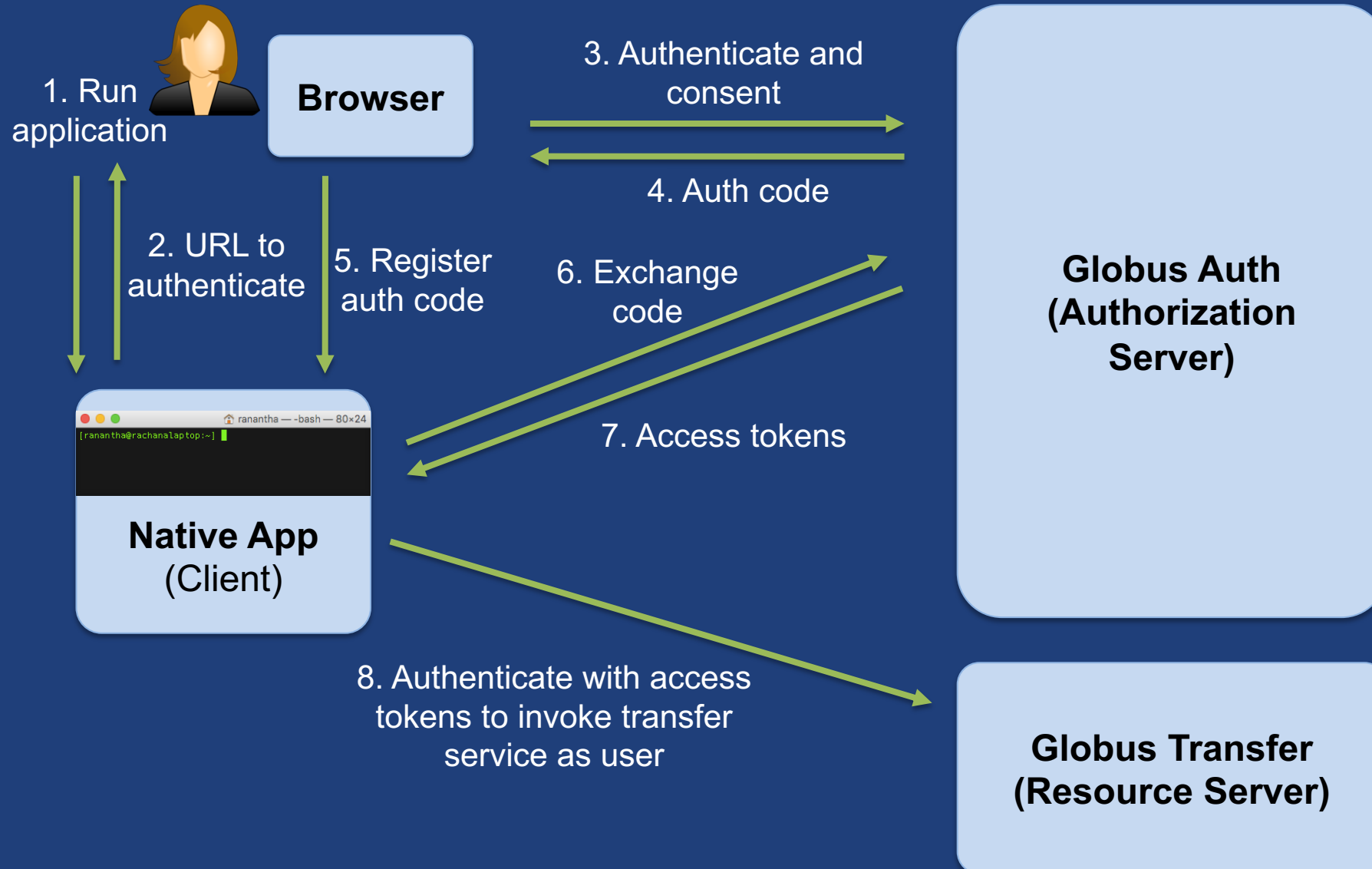


Use case: Native apps

- **Examples (any client that cannot keep a secret)**
 - Command line, desktop apps
 - Mobile apps
 - Jupyter notebooks
- **Native app is registered with Globus Auth**
 - Not a confidential client
- **Native App Grant is used**
 - Variation on the Authorization Code Grant
- **Globus SDK:**
 - To get tokens: `NativeAppAuthClient`
 - To use tokens: `AccessTokenAuthorizer`



Native App grant





Use case: Apps that need long-lived access tokens

- **Examples**

- Portal checking transfer status when user is not logged in
- Running command line app from script

- **App requests refresh tokens**

- **Globus SDK:**

- To get token: ConfidentialAppClient or NativeAppClient
- To use tokens: RefreshTokenAuthorizer



Automation Example: Repeated replication

Recurring transfers
with sync option



Copy /ingest
Daily @ 3:30am



- **Using Globus CLI or SDK**
- **Meant to be run via cron or other task manager**
- **Native app grant**

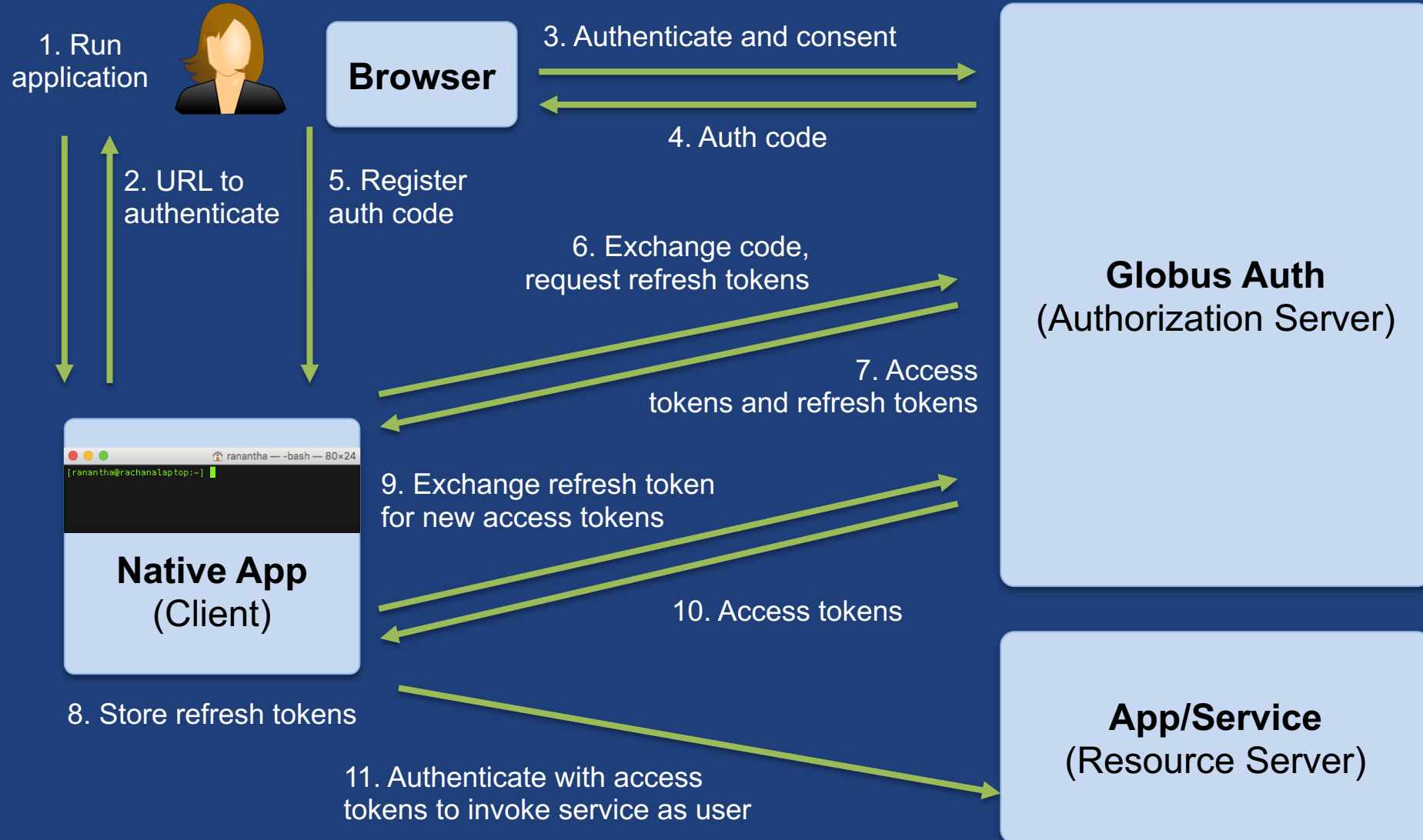


Refresh tokens

- **For “offline services”**
 - e.g., transfer working on your behalf even when you are offline
- **Refresh tokens issued to client, in particular scope**
- **Client uses refresh token to get access token**
 - Confidential client: `client_id` and `client_secret` required
 - Native app: `client_secret` not required
- **Refresh token good for 6 months after last use**
- **Consent rescindment revokes resource token**



Refresh tokens





Demo: Native App/Refresh Tokens

github.com/globus/native-app-examples

- **See README for installation**
- **`./example_copy_paste.py`**
 - Copy paste code to the app
- **`./example_copy_paste_refresh_token.py`**
 - Stores refresh token locally, uses it to get new access tokens

Use case: App invoking services as itself

- **Examples**
 - Sample portal invoking graph service and accessing endpoints as itself
 - Robots, agents, services
- **Every app is/has an identity in Globus Auth**
(`<client_id>@clients.auth.globus.org`)
- **App registers with Globus to get client id/secret**
 - Native app cannot do this (no `client_secret`)
- **Uses Client Credential Grant**
- **Can use the `client_id` just like any other `identity_id`**
 - Sharing access manager role, permissions, group membership, etc.
- **Globus SDK:**
 - To get tokens: `ConfidentialAppAuthClient`
 - To use tokens: `AccessTokenAuthorizer`



User identity vs. portal identity

- **User logging into portal results in portal having user's identity and access token**
 - Used to make requests on the user's behalf
- **Portal may also need its own identity**
 - Access and refresh tokens for this identity
 - Used to make requests on its own behalf, e.g. set an ACL on a shared endpoint

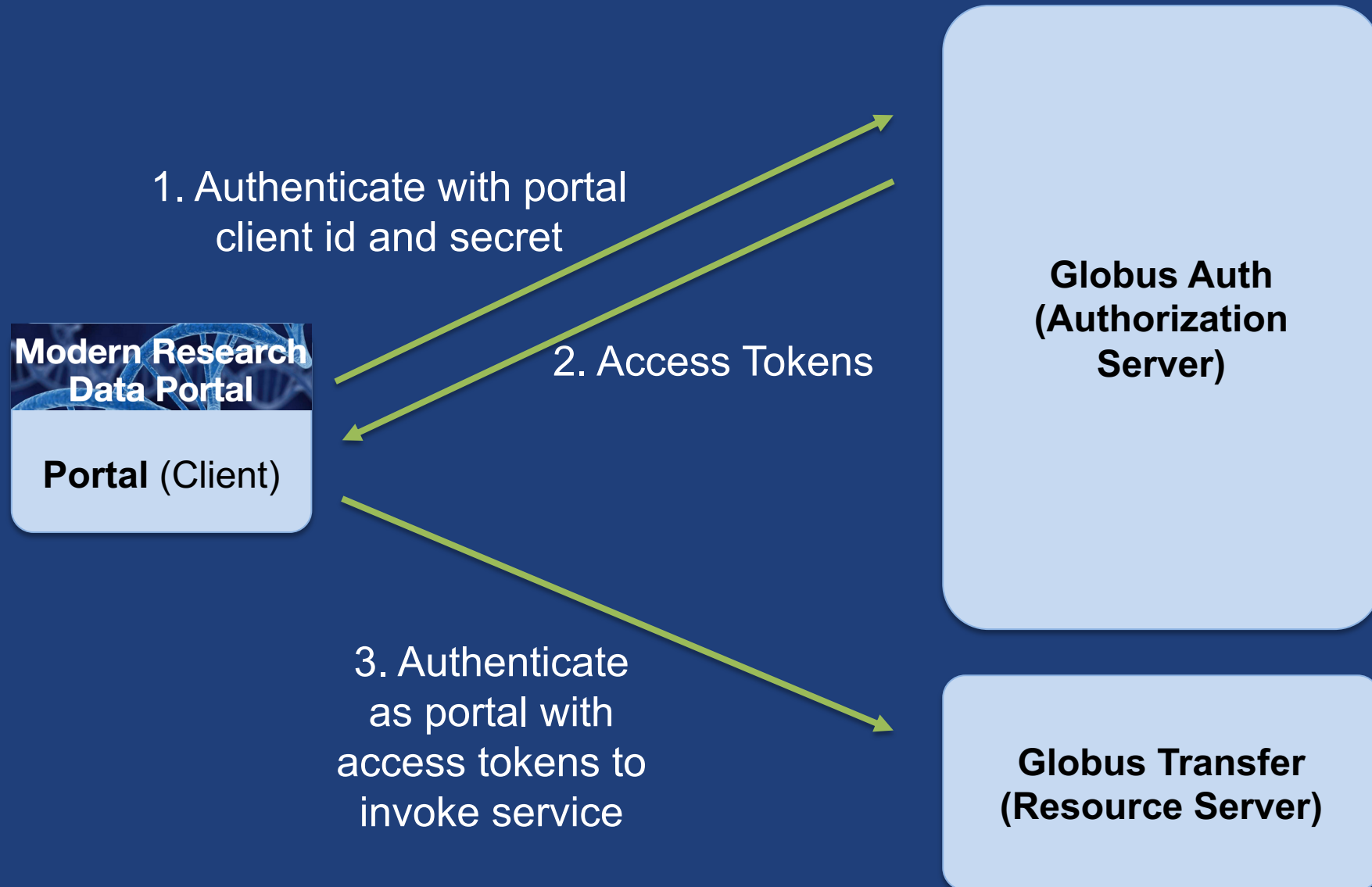
Automation Example: Data distribution



- **Uses Auth and Transfer API via SDK**
- **Native app grant**
- **Client credential grant**
 - Portal or service
 - Permission for the client id



Client credential grant

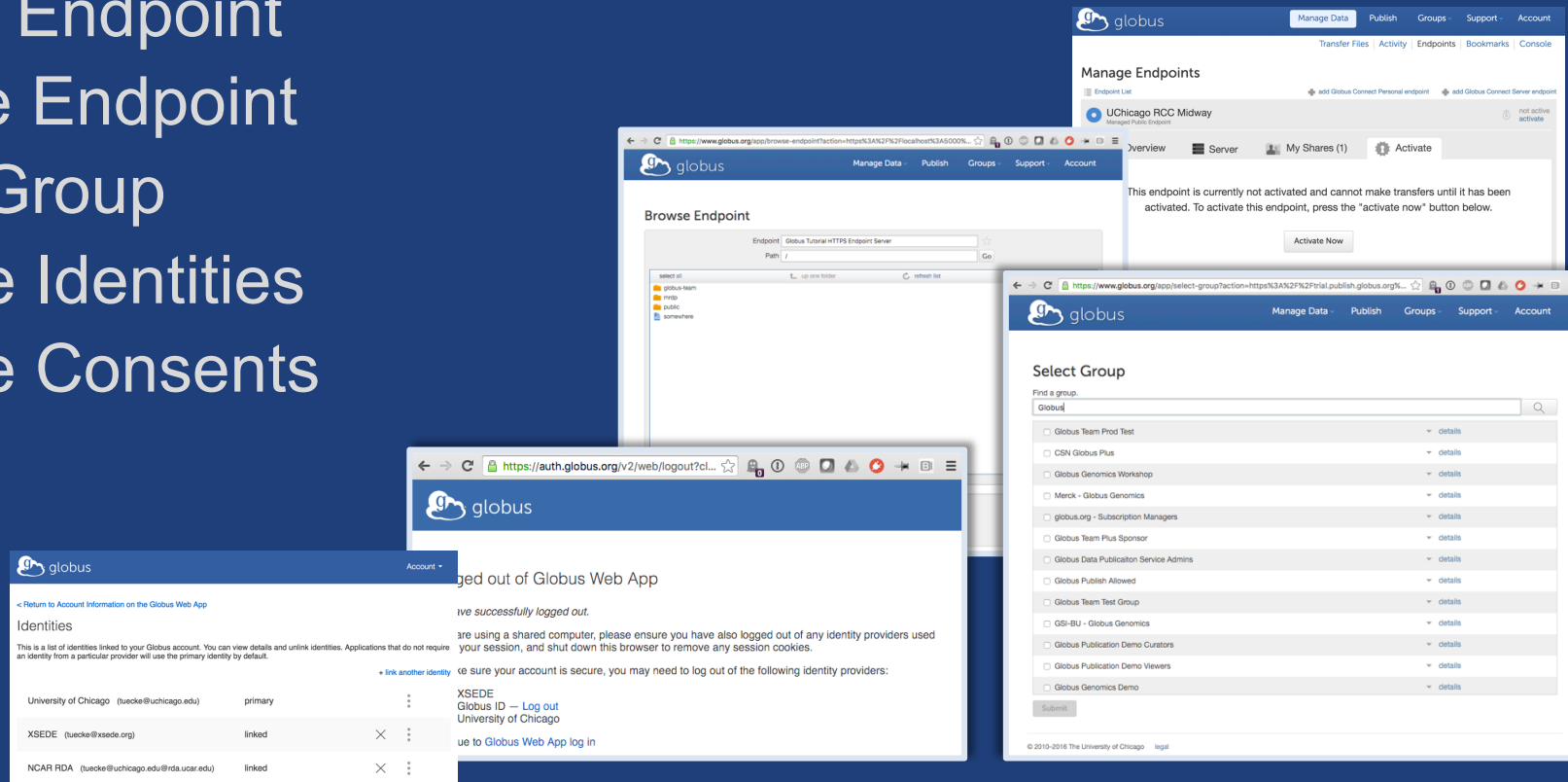


Exercise: Automation using the REST API

- **Use the `share_data` Python script to share files with your neighbor**
 - Modify the script to:
 - Create a shared endpoint
 - Add access permissions to the shared endpoint for your neighbor
 - Move data to the shared endpoint
 - Check that your neighbor received the sharing notification

Globus Helper Pages

- **Globus pages designed for use by your web apps**
 - Browse Endpoint
 - Activate Endpoint
 - Select Group
 - Manage Identities
 - Manage Consents
 - Logout



docs.globus.org/api/helper-pages



Globus PaaS developer resources

docs.globus.org/api

github.com/globus



Support resources

- **Globus documentation: docs.globus.org**
- **Helpdesk and issue escalation: support@globus.org**
- **Customer engagement team**
- **Globus professional services team**
 - Assist with portal/gateway/app architecture and design
 - Develop custom applications that leverage the Globus platform
 - Advise on customized deployment and integration scenarios



Join the Globus community

- Access the service: globus.org/login
- Create a personal endpoint: globus.org/app/endpoints/create-gcp
- Documentation: docs.globus.org
- Engage: globus.org/mailing-lists
- Subscribe: globus.org/subscriptions
- Need help? support@globus.org
- Follow us: [@globusonline](https://twitter.com/globusonline)